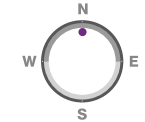
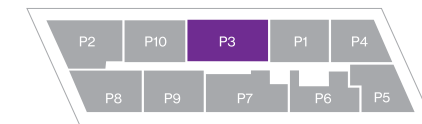


P3 / Line 01

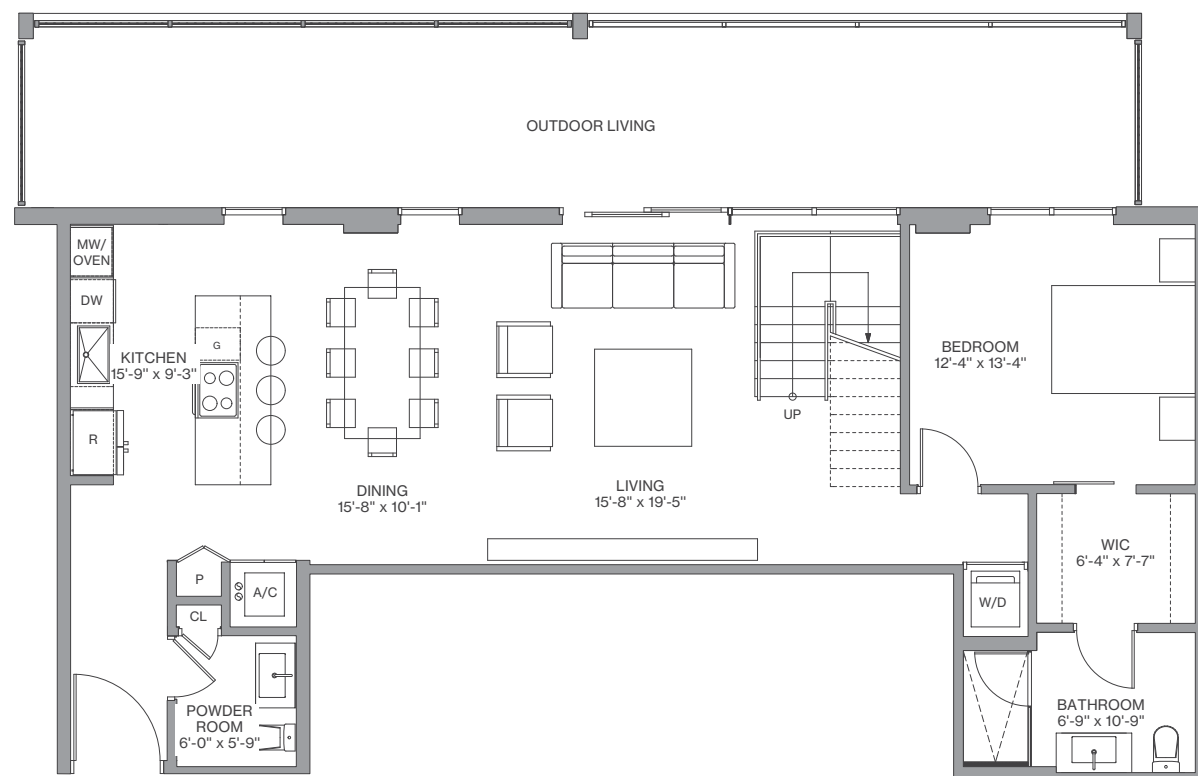
3 Bedrooms / 3.5 Baths

Floors: 27 - 28

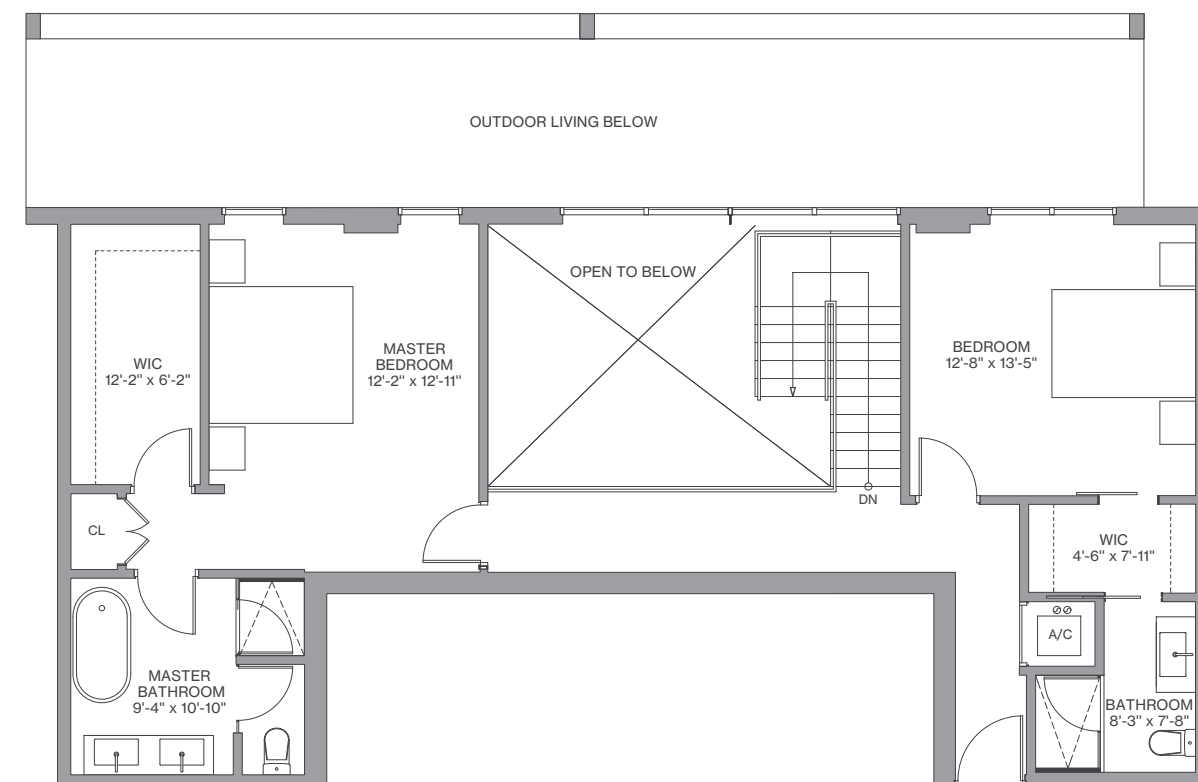
Residence Interior	2,015 Sq Ft	187 Sq M
Outdoor Living	462 Sq Ft	42 Sq M
Total :	2,477 Sq Ft	230 Sq M



FLOORS 27 - 28



Lower



Upper



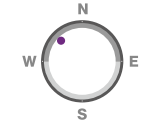
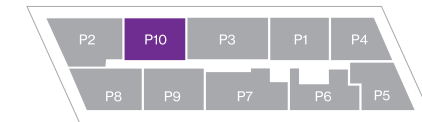
We are pledged to the letter and spirit of U.S. policy for the achievement of equal housing throughout the Nation. We encourage and support an affirmative advertising, marketing and sales program in which there are no barriers to obtaining housing because of race, color, sex, religion, handicap, familial status or national origin. Any stated square footages, dimensions and other measurements reflected herein are based on preliminary pre-construction plans, which are subject to change without notice and will vary with actual construction. Any stated square footages, dimensions and other measurements of units are measured to the exterior boundaries of the exterior walls and the centerline of interior demising walls between units and will vary from the dimensions of the unit that would be determined by using the description and definition of the "Unit" as set forth in the Declaration of Condominium (the "Declaration") for the Condominium (which generally only includes the interior airspace between the perimeter walls and excludes all interior structural components and other common elements). This method of measurement is generally used in sales materials and is provided to allow a prospective purchaser to compare the units in the Condominium with units in other condominium projects that utilize the same method. Terraces, patios and balconies are not part of the unit. Measurements and dimensions of rooms are generally taken at the farthest points of each given room (as if the room were a perfect rectangle), without regard for any cutouts, soffits or other variations. Accordingly, the square footage of the actual room will typically be smaller than the product obtained by multiplying the stated length and width. For the square footage of the units based on the definition of "Unit" in the Declaration, refer to Exhibit "2" to the Declaration included in the Condominium Documents. Each purchaser is advised that there are various methods for calculating the square footage of a Unit, and that, depending on the method of calculation, the quoted square footage of a Unit in advertising materials may vary from the square footage quoted in the Prospectus and Declaration. The dimensions of the Unit shown in these floor plans have been calculated from the exterior boundaries of the exterior walls to the centerline of interior demising walls, including common elements such as structural walls and other interior structural components of the building, and in fact vary from the dimensions that would be determined by using the description and definition of the "Unit" set forth in the Prospectus and Declaration. The area of the Unit as defined in the Prospectus and Declaration is less than the square footage reflected here. Measurements of rooms set forth on this floor plan are generally taken at the greatest points (as if the room were a perfect rectangle), without regard for any cutouts, meaning the usable area of the actual room will typically be smaller than calculated by multiplying the length times width. All dimensions are approximate, may vary with actual construction, and are subject to development plans which may change. The furnishings and décor illustrated or depicted are not included with the purchase of the Unit. See Prospectus for information on what is offered with the Unit and the Unit square footage and dimensions.

P10 / Line 02

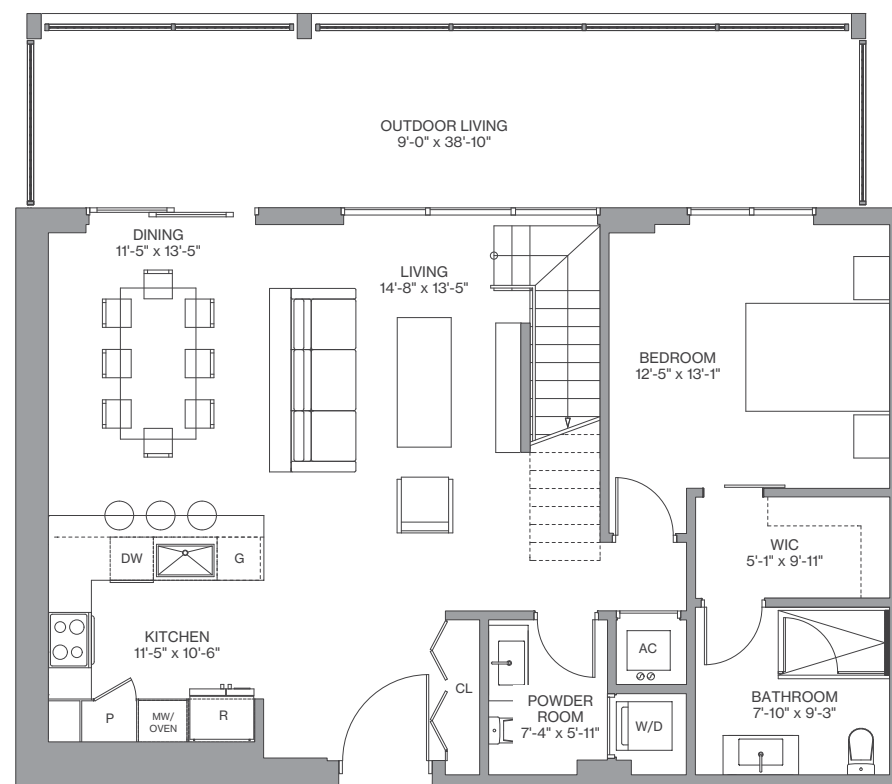
3 Bedrooms / 3.5 Baths

Floors: 27 - 28

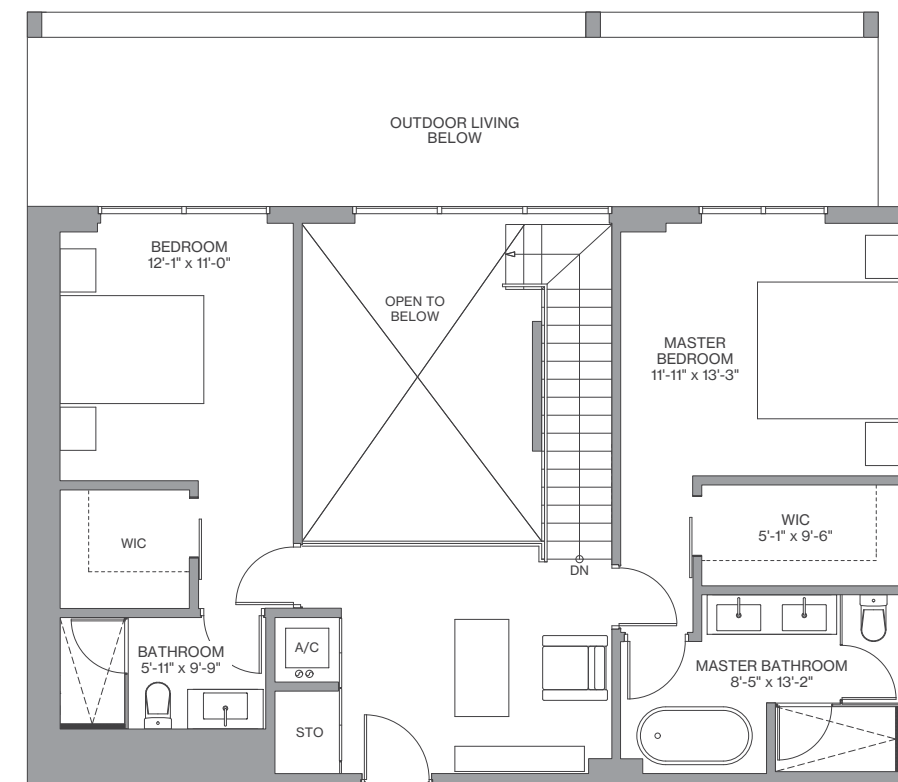
Residence Interior	1,901 Sq Ft	177 Sq M
Outdoor Living	350 Sq Ft	32 Sq M
Total :	2,251 Sq Ft	209 Sq M



FLOORS 27 - 28



Lower



Upper

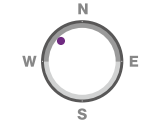
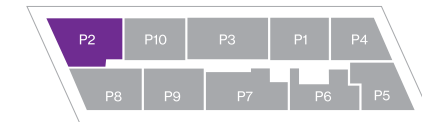
We are pledged to the letter and spirit of U.S. policy for the achievement of equal housing throughout the Nation. We encourage and support an affirmative advertising, marketing and sales program in which there are no barriers to obtaining housing because of race, color, sex, religion, handicap, familial status or national origin. Any stated square footages, dimensions and other measurements reflected herein are based on preliminary pre-construction plans, which are subject to change without notice and will vary with actual construction. Any stated square footages, dimensions and other measurements of units are measured to the exterior boundaries of the exterior walls and the centerline of interior demising walls between units and will vary from the dimensions of the unit that would be determined by using the description and definition of the "Unit" as set forth in the Declaration of Condominium (the "Declaration") for the Condominium (which generally only includes the interior airspace between the perimeter walls and excludes all interior structural components and other common elements). This method of measurement is generally used in sales materials and is provided to allow a prospective purchaser to compare the units in the Condominium with units in other condominium projects that utilize the same method. Terraces, patios and balconies are not part of the unit. Measurements and dimensions of rooms are generally taken at the farthest points of each given room (as if the room were a perfect rectangle), without regard for any cutouts, soffits or other variations. Accordingly, the square footage of the actual room will typically be smaller than the product obtained by multiplying the stated length and width. For the square footage of the units based on the definition of "Unit" in the Declaration, refer to Exhibit "2" to the Declaration included in the Condominium Documents. Each purchaser is advised that there are various methods for calculating the square footage of a Unit, and that, depending on the method of calculation, the quoted square footage of a Unit in advertising materials may vary from the square footage quoted in the Prospectus and Declaration. The dimensions of the Unit shown in these floor plans have been calculated from the exterior boundaries of the exterior walls to the centerline of interior demising walls, including common elements such as structural walls and other interior structural components of the building, and in fact vary from the dimensions that would be determined by using the description and definition of the "Unit" set forth in the Prospectus and Declaration. The area of the Unit as defined in the Prospectus and Declaration is less than the square footage reflected here. Measurements of rooms set forth on this floor plan are generally taken at the greatest points (as if the room were a perfect rectangle), without regard for any cutouts, meaning the usable area of the actual room will typically be smaller than calculated by multiplying the length times width. All dimensions are approximate, may vary with actual construction, and are subject to development plans which may change. The furnishings and décor illustrated or depicted are not included with the purchase of the Unit. See Prospectus for information on what is offered with the Unit and the Unit square footage and dimensions.

P2 / Line 03

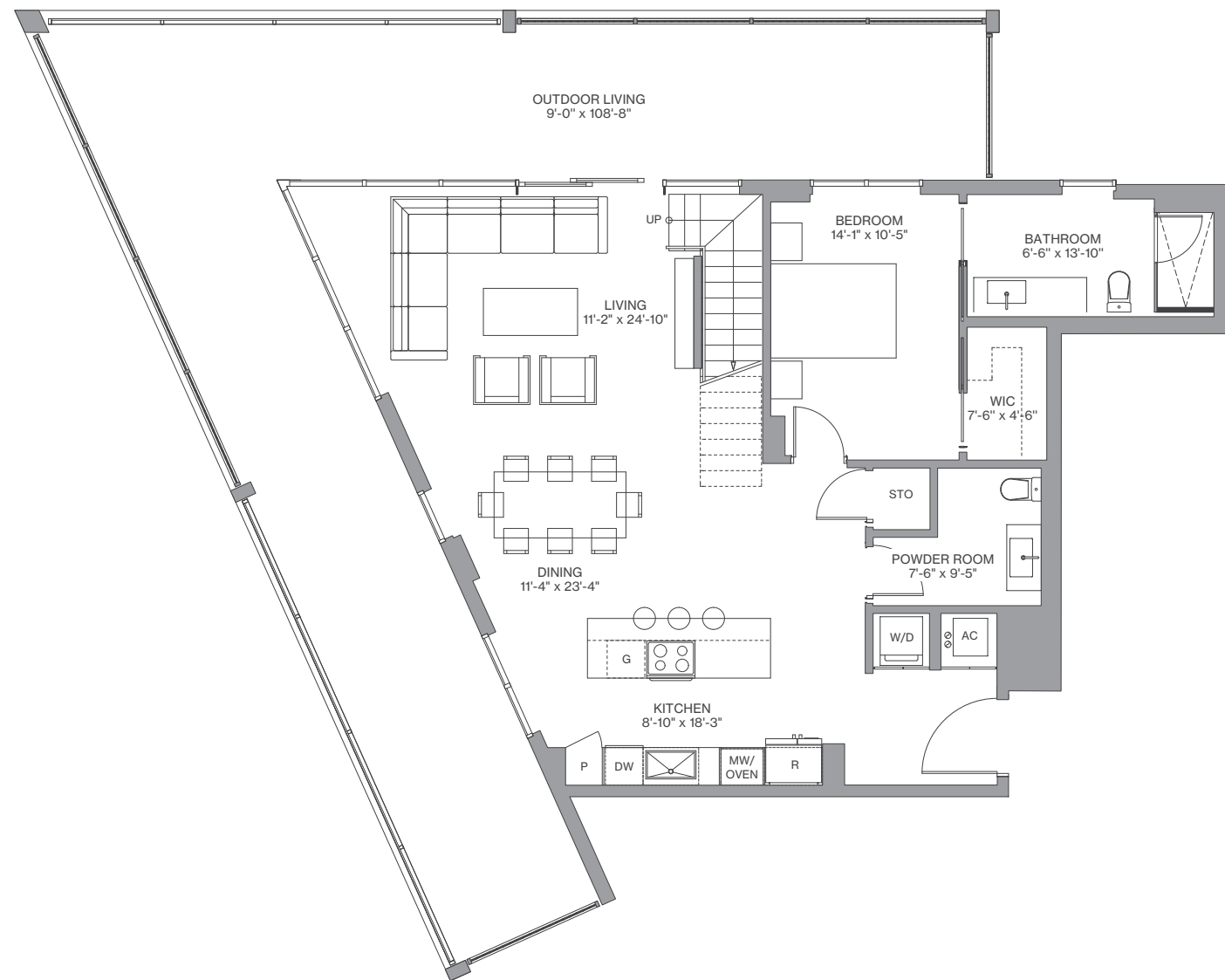
3 Bedrooms / 3.5 Baths

Floors: 27 - 28

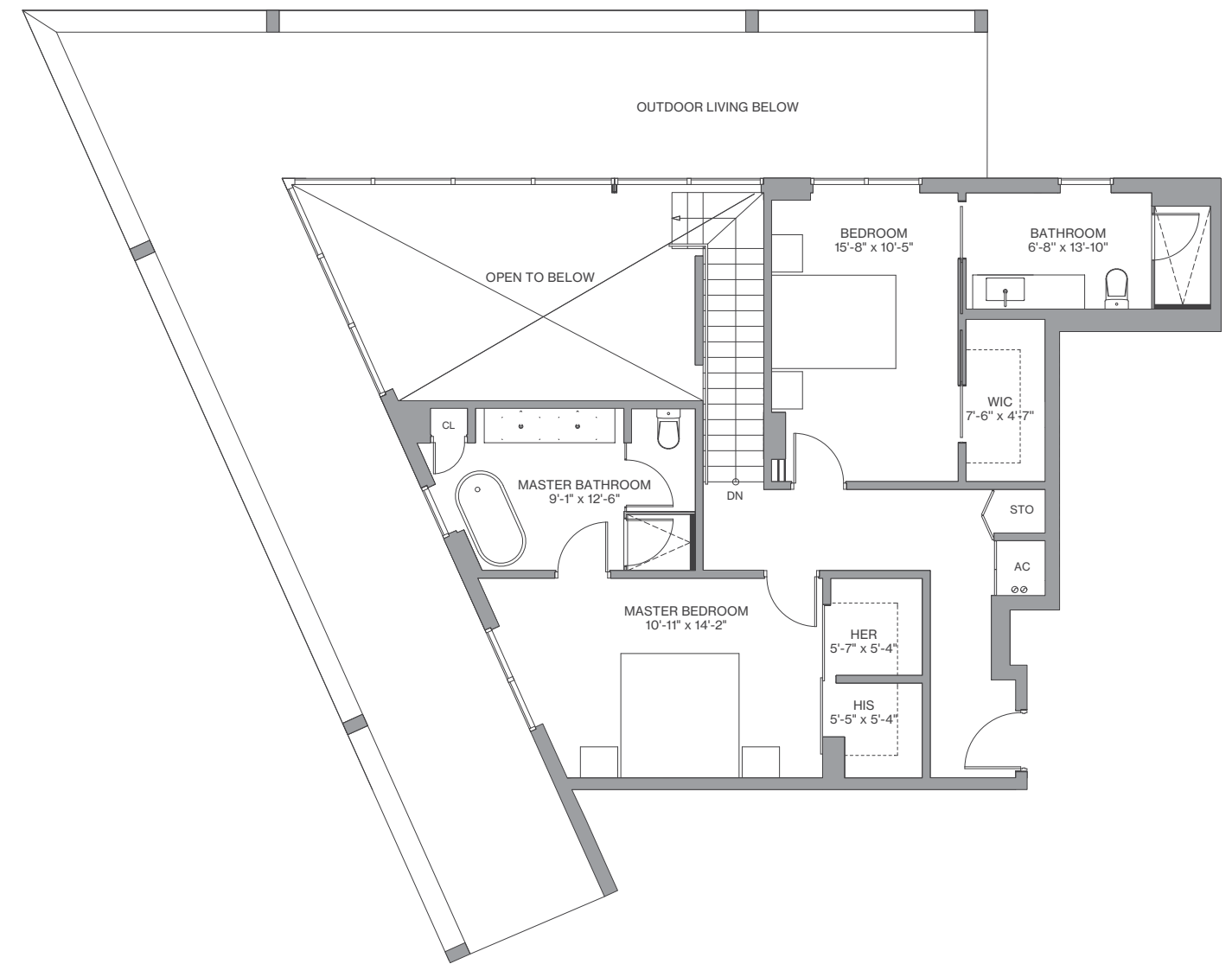
Residence Interior	2,058 Sq Ft	191 Sq M
Outdoor Living	850 Sq Ft	79 Sq M
Total :	2,908 Sq Ft	270 Sq M



FLOORS 27 - 28



Lower



Upper



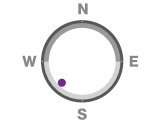
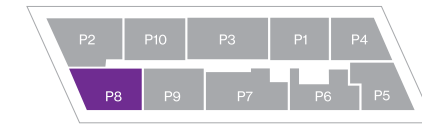
We are pledged to the letter and spirit of U.S. policy for the achievement of equal housing throughout the Nation. We encourage and support an affirmative advertising, marketing and sales program in which there are no barriers to obtaining housing because of race, color, sex, religion, handicap, familial status or national origin. Any stated square footages, dimensions and other measurements reflected herein are based on preliminary pre-construction plans, which are subject to change without notice and will vary with actual construction. Any stated square footages, dimensions and other measurements of units are measured to the exterior boundaries of the exterior walls and the centerline of interior demising walls between units and will vary from the dimensions of the unit that would be determined by using the description and definition of the "Unit" as set forth in the Declaration of Condominium (the "Declaration") for the Condominium (which generally only includes the interior airspace between the perimeter walls and excludes all interior structural components and other common elements). This method of measurement is generally used in sales materials and is provided to allow a prospective purchaser to compare the units in the Condominium with units in other condominium projects that utilize the same method. Terraces, patios and balconies are not part of the unit. Measurements and dimensions of rooms are generally taken at the farthest points of each given room (as if the room were a perfect rectangle), without regard for any cutouts, soffits or other variations. Accordingly, the square footage of the actual room will typically be smaller than the product obtained by multiplying the stated length and width. For the square footage of the units based on the definition of "Unit" in the Declaration, refer to Exhibit "2" to the Declaration included in the Condominium Documents. Each purchaser is advised that there are various methods for calculating the square footage of a Unit, and that, depending on the method of calculation, the quoted square footage of a Unit in advertising materials may vary from the square footage quoted in the Prospectus and Declaration. The dimensions of the Unit shown in these floor plans have been calculated from the exterior boundaries of the exterior walls to the centerline of interior demising walls, including common elements such as structural walls and other interior structural components of the building, and in fact vary from the dimensions that would be determined by using the description and definition of the "Unit" set forth in the Prospectus and Declaration. The area of the Unit as defined in the Prospectus and Declaration is less than the square footage reflected here. Measurements of rooms set forth on this floor plan are generally taken at the greatest points (as if the room were a perfect rectangle), without regard for any cutouts, meaning the usable area of the actual room will typically be smaller than calculated by multiplying the length times width. All dimensions are approximate, may vary with actual construction, and are subject to development plans which may change. The furnishings and décor illustrated or depicted are not included with the purchase of the Unit. See Prospectus for information on what is offered with the Unit and the Unit square footage and dimensions.

P8 / Line 04

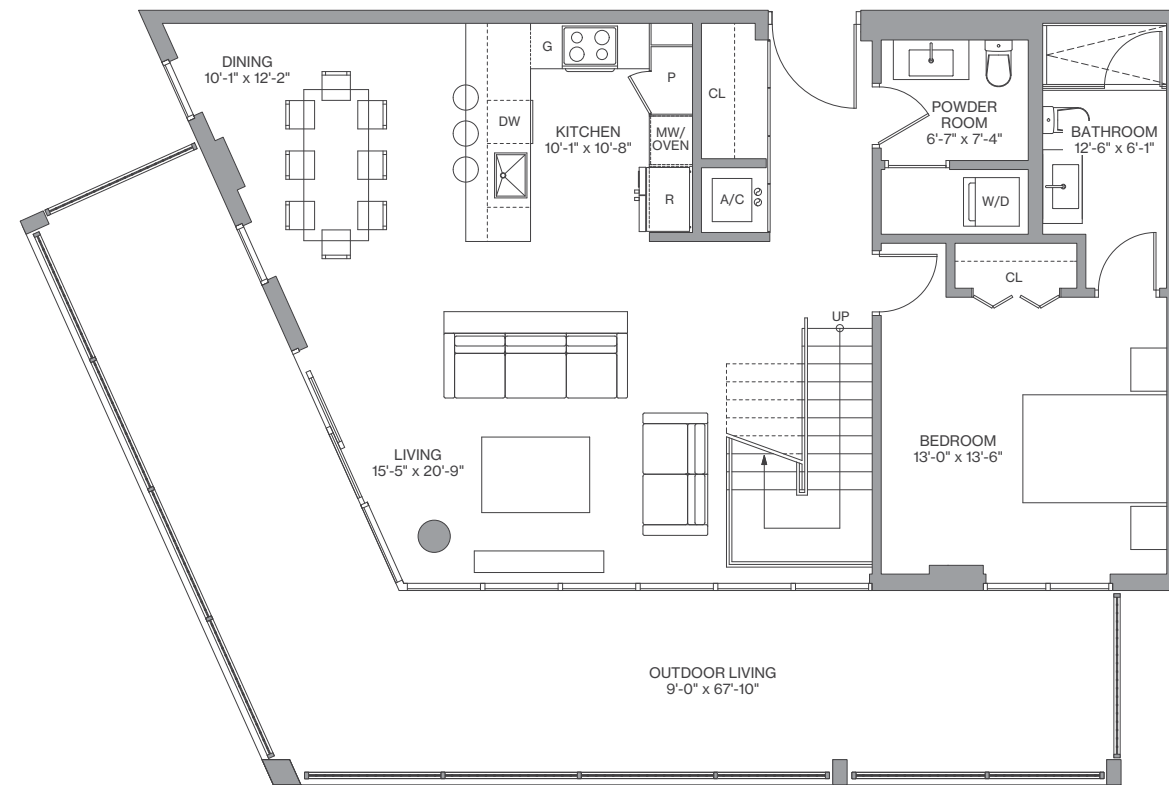
3 Bedrooms / 3.5 Baths

Floors: 27 - 28

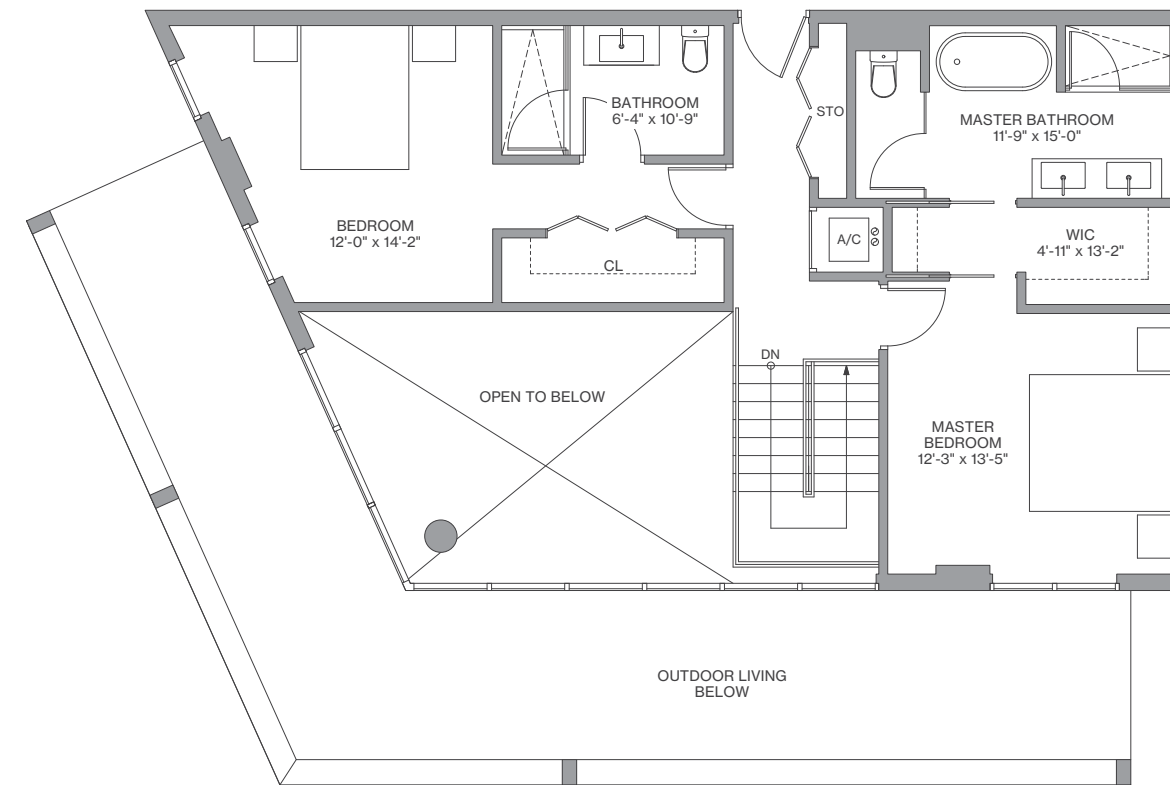
Residence Interior	1,945 Sq Ft	180 Sq M
Outdoor Living	554 Sq Ft	51 Sq M
Total :	2,499 Sq Ft	232 Sq M



FLOORS 27 - 28



Lower



Upper



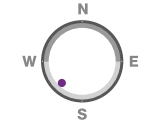
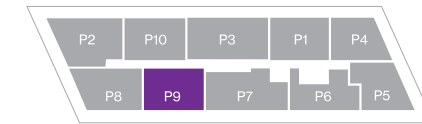
We are pledged to the letter and spirit of U.S. policy for the achievement of equal housing throughout the Nation. We encourage and support an affirmative advertising, marketing and sales program in which there are no barriers to obtaining housing because of race, color, sex, religion, handicap, familial status or national origin. Any stated square footages, dimensions and other measurements reflected herein are based on preliminary pre-construction plans, which are subject to change without notice and will vary with actual construction. Any stated square footages, dimensions and other measurements of units are measured to the exterior boundaries of the exterior walls and the centerline of interior demising walls between units and will vary from the dimensions of the unit that would be determined by using the description and definition of the "Unit" as set forth in the Declaration of Condominium (the "Declaration") for the Condominium (which generally only includes the interior airspace between the perimeter walls and excludes all interior structural components and other common elements). This method of measurement is generally used in sales materials and is provided to allow a prospective purchaser to compare the units in the Condominium with units in other condominium projects that utilize the same method. Terraces, patios and balconies are not part of the unit. Measurements and dimensions of rooms are generally taken at the farthest points of each given room (as if the room were a perfect rectangle), without regard for any cutouts, soffits or other variations. Accordingly, the square footage of the actual room will typically be smaller than the product obtained by multiplying the stated length and width. For the square footage of the units based on the definition of "Unit" in the Declaration, refer to Exhibit "2" to the Declaration included in the Condominium Documents. Each purchaser is advised that there are various methods for calculating the square footage of a Unit, and that, depending on the method of calculation, the quoted square footage of a Unit in advertising materials may vary from the square footage quoted in the Prospectus and Declaration. The dimensions of the Unit shown in these floor plans have been calculated from the exterior boundaries of the exterior walls to the centerline of interior demising walls, including common elements such as structural walls and other interior structural components of the building, and in fact vary from the dimensions that would be determined by using the description and definition of the "Unit" set forth in the Prospectus and Declaration. The area of the Unit as defined in the Prospectus and Declaration is less than the square footage reflected here. Measurements of rooms set forth on this floor plan are generally taken at the greatest points (as if the room were a perfect rectangle), without regard for any cutouts, meaning the usable area of the actual room will typically be smaller than calculated by multiplying the length times width. All dimensions are approximate, may vary with actual construction, and are subject to development plans which may change. The furnishings and décor illustrated or depicted are not included with the purchase of the Unit. See Prospectus for information on what is offered with the Unit and the Unit square footage and dimensions.

P9 / Line 05

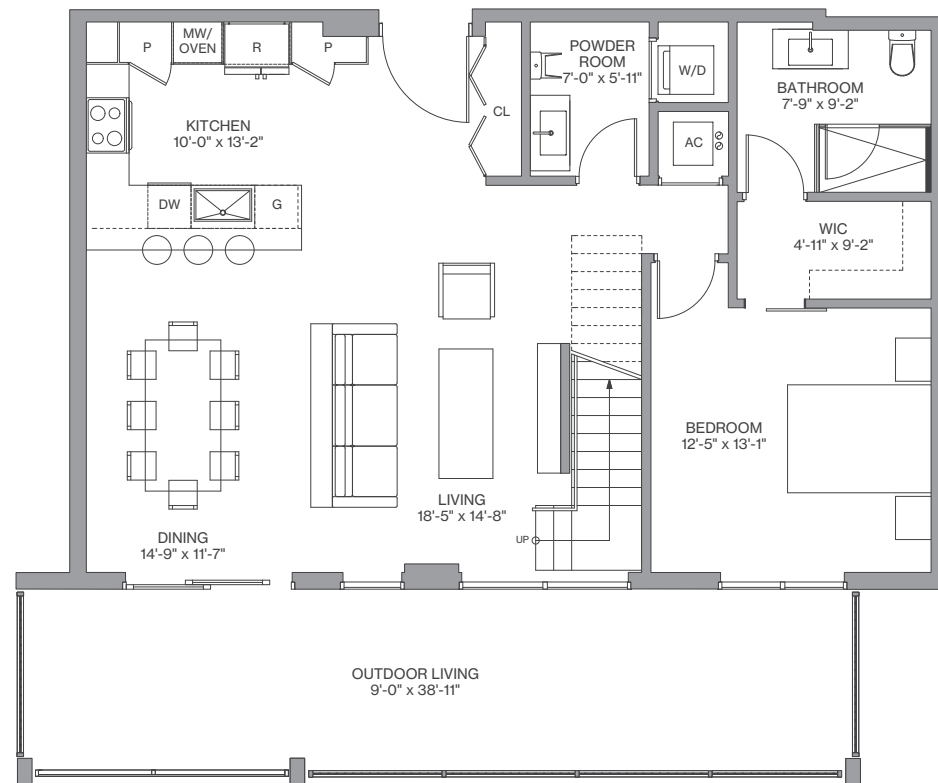
3 Bedrooms / 3.5 Baths

Floors: 27 - 28

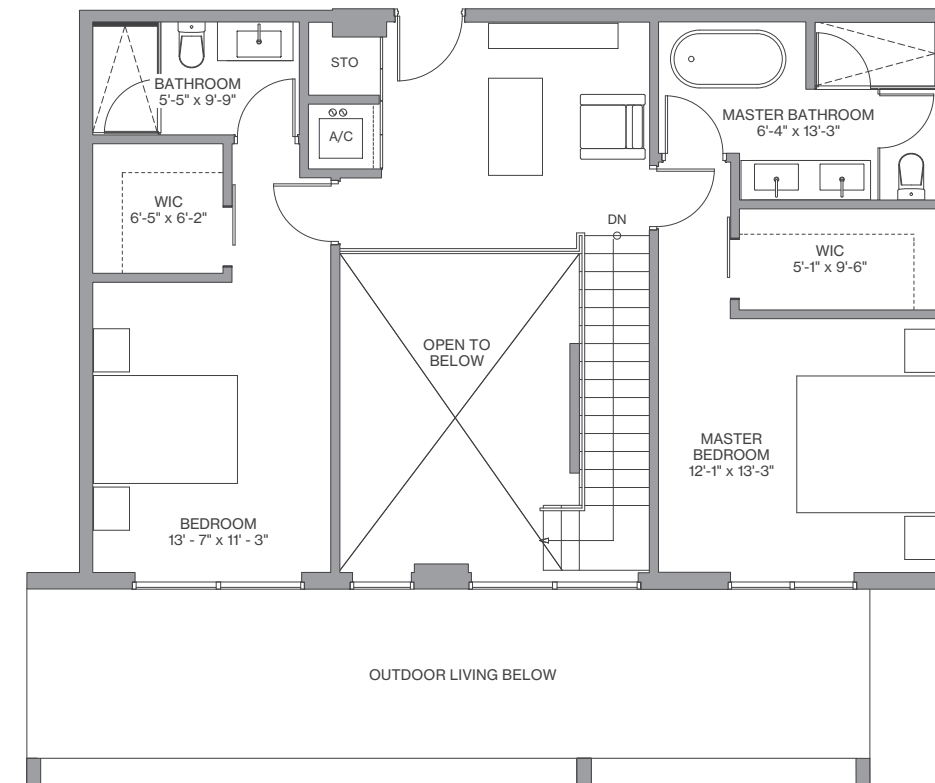
Residence Interior	1,901 Sq Ft	177 Sq M
Outdoor Living	350 Sq Ft	32 Sq M
Total :	2,251 Sq Ft	209 Sq M



FLOORS 27 - 28



Lower



Upper



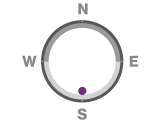
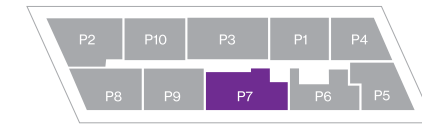
We are pledged to the letter and spirit of U.S. policy for the achievement of equal housing throughout the Nation. We encourage and support an affirmative advertising, marketing and sales program in which there are no barriers to obtaining housing because of race, color, sex, religion, handicap, familial status or national origin. Any stated square footages, dimensions and other measurements reflected herein are based on preliminary pre-construction plans, which are subject to change without notice and will vary with actual construction. Any stated square footages, dimensions and other measurements of units are measured to the exterior boundaries of the exterior walls and the centerline of interior demising walls between units and will vary from the dimensions of the unit that would be determined by using the description and definition of the "Unit" as set forth in the Declaration of Condominium (the "Declaration") for the Condominium (which generally only includes the interior airspace between the perimeter walls and excludes all interior structural components and other common elements). This method of measurement is generally used in sales materials and is provided to allow a prospective purchaser to compare the units in the Condominium with units in other condominium projects that utilize the same method. Terraces, patios and balconies are not part of the unit. Measurements and dimensions of rooms are generally taken at the farthest points of each given room (as if the room were a perfect rectangle), without regard for any cutouts, soffits or other variations. Accordingly, the square footage of the actual room will typically be smaller than the product obtained by multiplying the stated length and width. For the square footage of the units based on the definition of "Unit" in the Declaration, refer to Exhibit "2" to the Declaration included in the Condominium Documents. Each purchaser is advised that there are various methods for calculating the square footage of a Unit, and that, depending on the method of calculation, the quoted square footage of a Unit in advertising materials may vary from the square footage quoted in the Prospectus and Declaration. The dimensions of the Unit shown in these floor plans have been calculated from the exterior boundaries of the exterior walls to the centerline of interior demising walls, including common elements such as structural walls and other interior structural components of the building, and in fact vary from the dimensions that would be determined by using the description and definition of the "Unit" set forth in the Prospectus and Declaration. The area of the Unit as defined in the Prospectus and Declaration is less than the square footage reflected here. Measurements of rooms set forth on this floor plan are generally taken at the greatest points (as if the room were a perfect rectangle), without regard for any cutouts, meaning the usable area of the actual room will typically be smaller than calculated by multiplying the length times width. All dimensions are approximate, may vary with actual construction, and are subject to development plans which may change. The furnishings and décor illustrated or depicted are not included with the purchase of the Unit. See Prospectus for information on what is offered with the Unit and the Unit square footage and dimensions.

P7 / Line 07

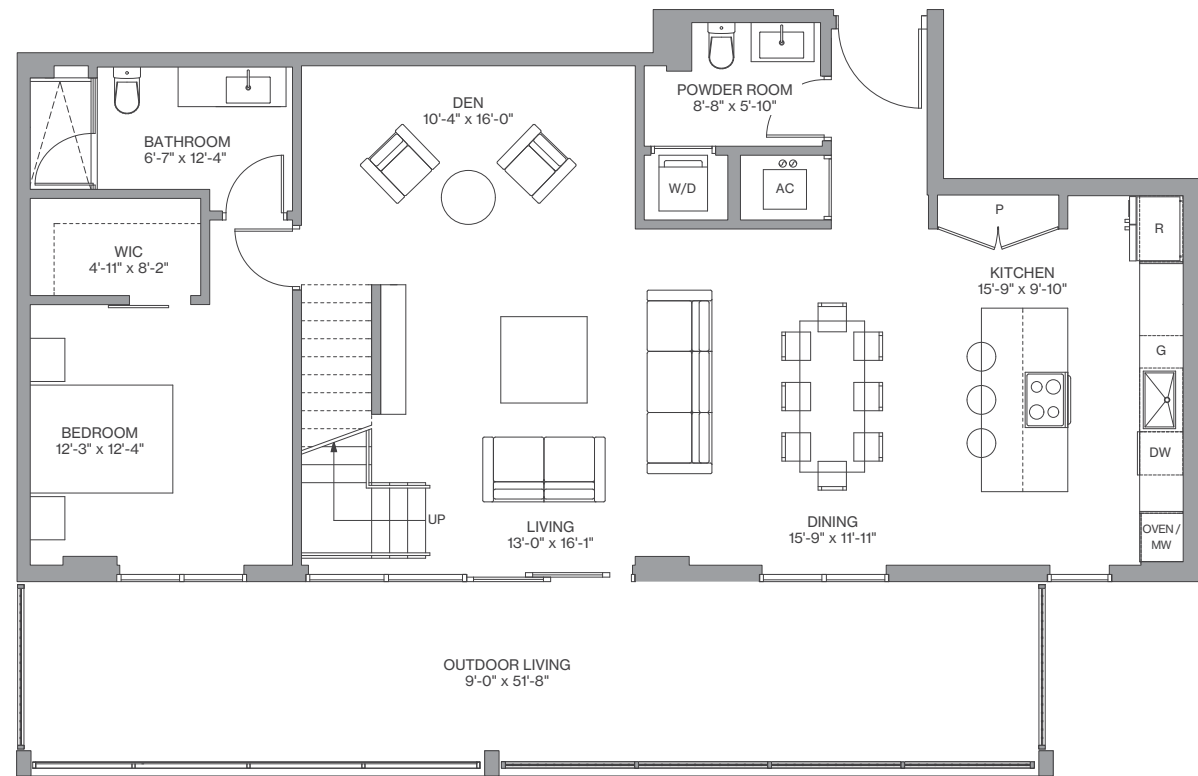
3 Bedrooms / 3.5 Baths

Floors: 27 - 28

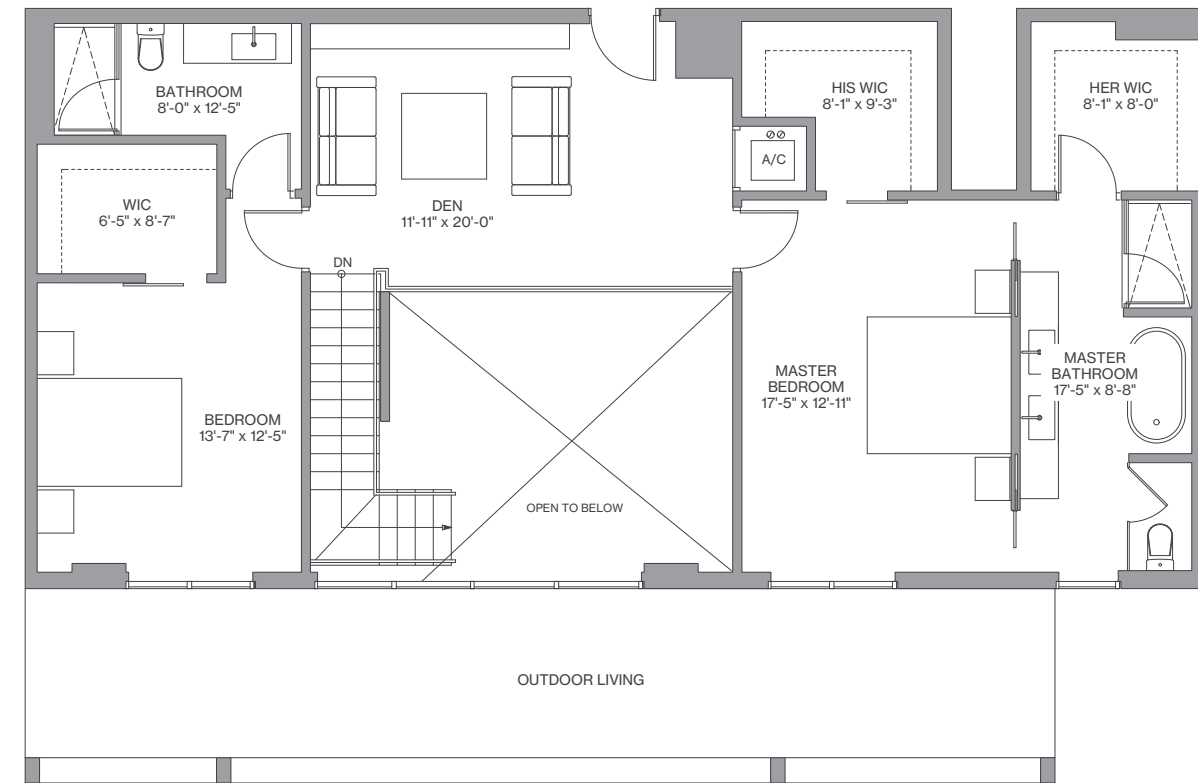
Residence Interior	2,448 Sq Ft	227 Sq M
Outdoor Living	462 Sq Ft	43 Sq M
Total :	2,910 Sq Ft	270 Sq M



FLOORS 27 - 28



Lower



Upper



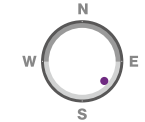
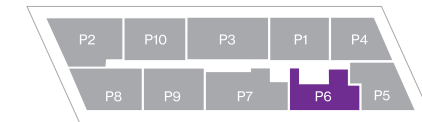
We are pledged to the letter and spirit of U.S. policy for the achievement of equal housing throughout the Nation. We encourage and support an affirmative advertising, marketing and sales program in which there are no barriers to obtaining housing because of race, color, sex, religion, handicap, familial status or national origin. Any stated square footages, dimensions and other measurements reflected herein are based on preliminary pre-construction plans, which are subject to change without notice and will vary with actual construction. Any stated square footages, dimensions and other measurements of units are measured to the exterior boundaries of the exterior walls and the centerline of interior demising walls between units and will vary from the dimensions of the unit that would be determined by using the description and definition of the "Unit" as set forth in the Declaration of Condominium (the "Declaration") for the Condominium (which generally only includes the interior airspace between the perimeter walls and excludes all interior structural components and other common elements). This method of measurement is generally used in sales materials and is provided to allow a prospective purchaser to compare the units in the Condominium with units in other condominium projects that utilize the same method. Terraces, patios and balconies are not part of the unit. Measurements and dimensions of rooms are generally taken at the farthest points of each given room (as if the room were a perfect rectangle), without regard for any cutouts, soffits or other variations. Accordingly, the square footage of the actual room will typically be smaller than the product obtained by multiplying the stated length and width. For the square footage of the units based on the definition of "Unit" in the Declaration, refer to Exhibit "2" to the Declaration included in the Condominium Documents. Each purchaser is advised that there are various methods for calculating the square footage of a Unit, and that, depending on the method of calculation, the quoted square footage of a Unit in advertising materials may vary from the square footage quoted in the Prospectus and Declaration. The dimensions of the Unit shown in these floor plans have been calculated from the exterior boundaries of the exterior walls to the centerline of interior demising walls, including common elements such as structural walls and other interior structural components of the building, and in fact vary from the dimensions that would be determined by using the description and definition of the "Unit" set forth in the Prospectus and Declaration. The area of the Unit as defined in the Prospectus and Declaration is less than the square footage reflected here. Measurements of rooms set forth on this floor plan are generally taken at the greatest points (as if the room were a perfect rectangle), without regard for any cutouts, meaning the usable area of the actual room will typically be smaller than calculated by multiplying the length times width. All dimensions are approximate, may vary with actual construction, and are subject to development plans which may change. The furnishings and décor illustrated or depicted are not included with the purchase of the Unit. See Prospectus for information on what is offered with the Unit and the Unit square footage and dimensions.

P6 / Line 08

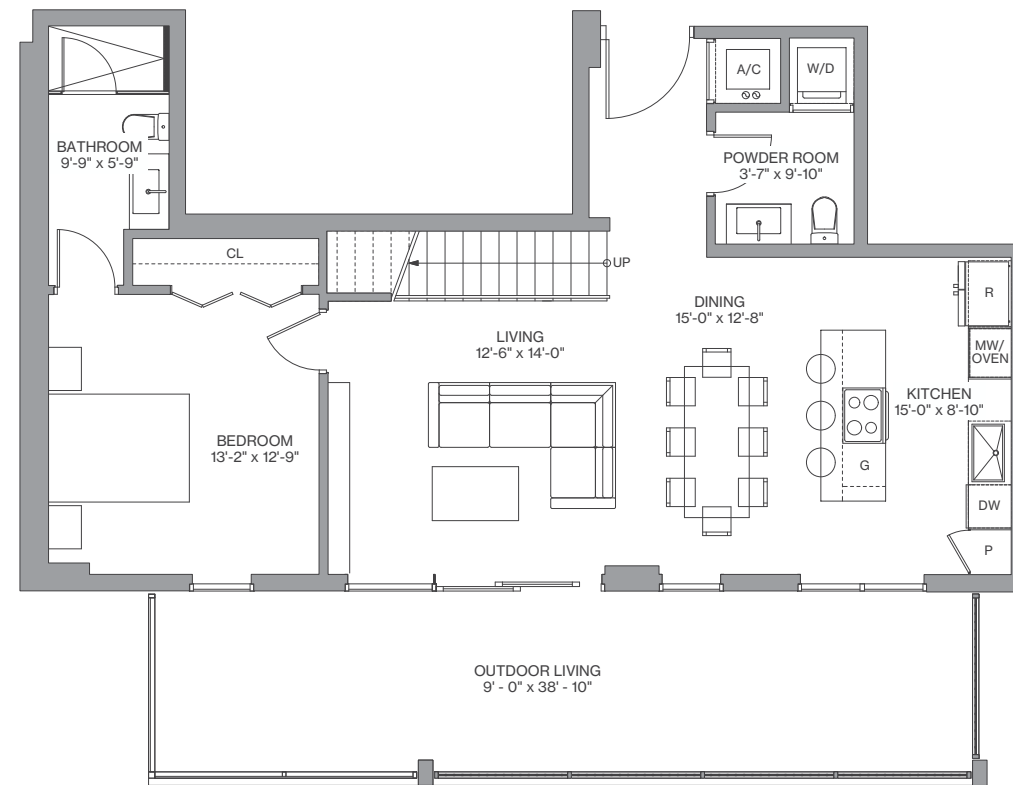
3 Bedrooms / 3.5 Baths

Floors: 27 - 28

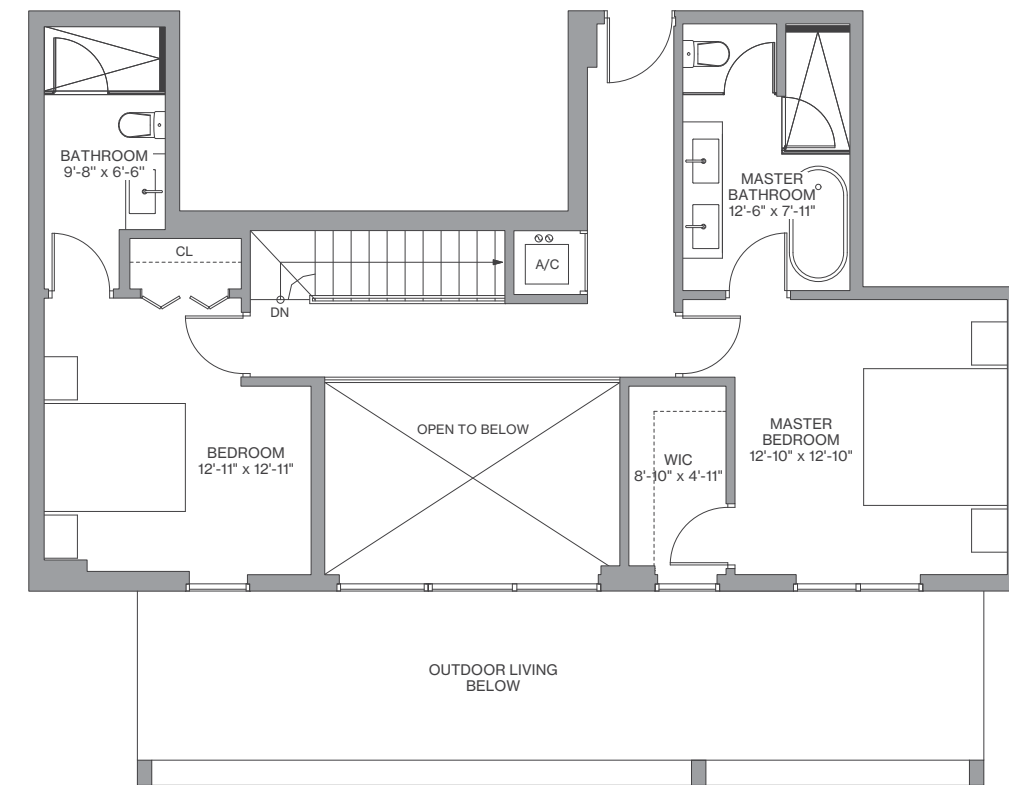
Residence Interior	1,738 Sq Ft	161 Sq M
Outdoor Living	350 Sq Ft	32 Sq M
Total :	2,088 Sq Ft	194 Sq M



FLOORS 27 - 28



Lower



Upper



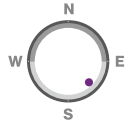
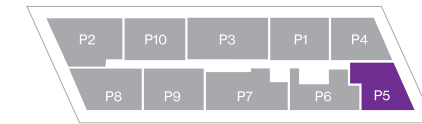
We are pledged to the letter and spirit of U.S. policy for the achievement of equal housing throughout the Nation. We encourage and support an affirmative advertising, marketing and sales program in which there are no barriers to obtaining housing because of race, color, sex, religion, handicap, familial status or national origin. Any stated square footages, dimensions and other measurements reflected herein are based on preliminary pre-construction plans, which are subject to change without notice and will vary with actual construction. Any stated square footages, dimensions and other measurements of units are measured to the exterior boundaries of the exterior walls and the centerline of interior demising walls between units and will vary from the dimensions of the unit that would be determined by using the description and definition of the "Unit" as set forth in the Declaration of Condominium (the "Declaration") for the Condominium (which generally only includes the interior airspace between the perimeter walls and excludes all interior structural components and other common elements). This method of measurement is generally used in sales materials and is provided to allow a prospective purchaser to compare the units in the Condominium with units in other condominium projects that utilize the same method. Terraces, patios and balconies are not part of the unit. Measurements and dimensions of rooms are generally taken at the farthest points of each given room (as if the room were a perfect rectangle), without regard for any cutouts, soffits or other variations. Accordingly, the square footage of the actual room will typically be smaller than the product obtained by multiplying the stated length and width. For the square footage of the units based on the definition of "Unit" in the Declaration, refer to Exhibit "2" to the Declaration included in the Condominium Documents. Each purchaser is advised that there are various methods for calculating the square footage of a Unit, and that, depending on the method of calculation, the quoted square footage of a Unit in advertising materials may vary from the square footage quoted in the Prospectus and Declaration. The dimensions of the Unit shown in these floor plans have been calculated from the exterior boundaries of the exterior walls to the centerline of interior demising walls, including common elements such as structural walls and other interior structural components of the building, and in fact vary from the dimensions that would be determined by using the description and definition of the "Unit" set forth in the Prospectus and Declaration. The area of the Unit as defined in the Prospectus and Declaration is less than the square footage reflected here. Measurements of rooms set forth on this floor plan are generally taken at the greatest points (as if the room were a perfect rectangle), without regard for any cutouts, meaning the usable area of the actual room will typically be smaller than calculated by multiplying the length times width. All dimensions are approximate, may vary with actual construction, and are subject to development plans which may change. The furnishings and décor illustrated or depicted are not included with the purchase of the Unit. See Prospectus for information on what is offered with the Unit and the Unit square footage and dimensions.

P5 / Line 09

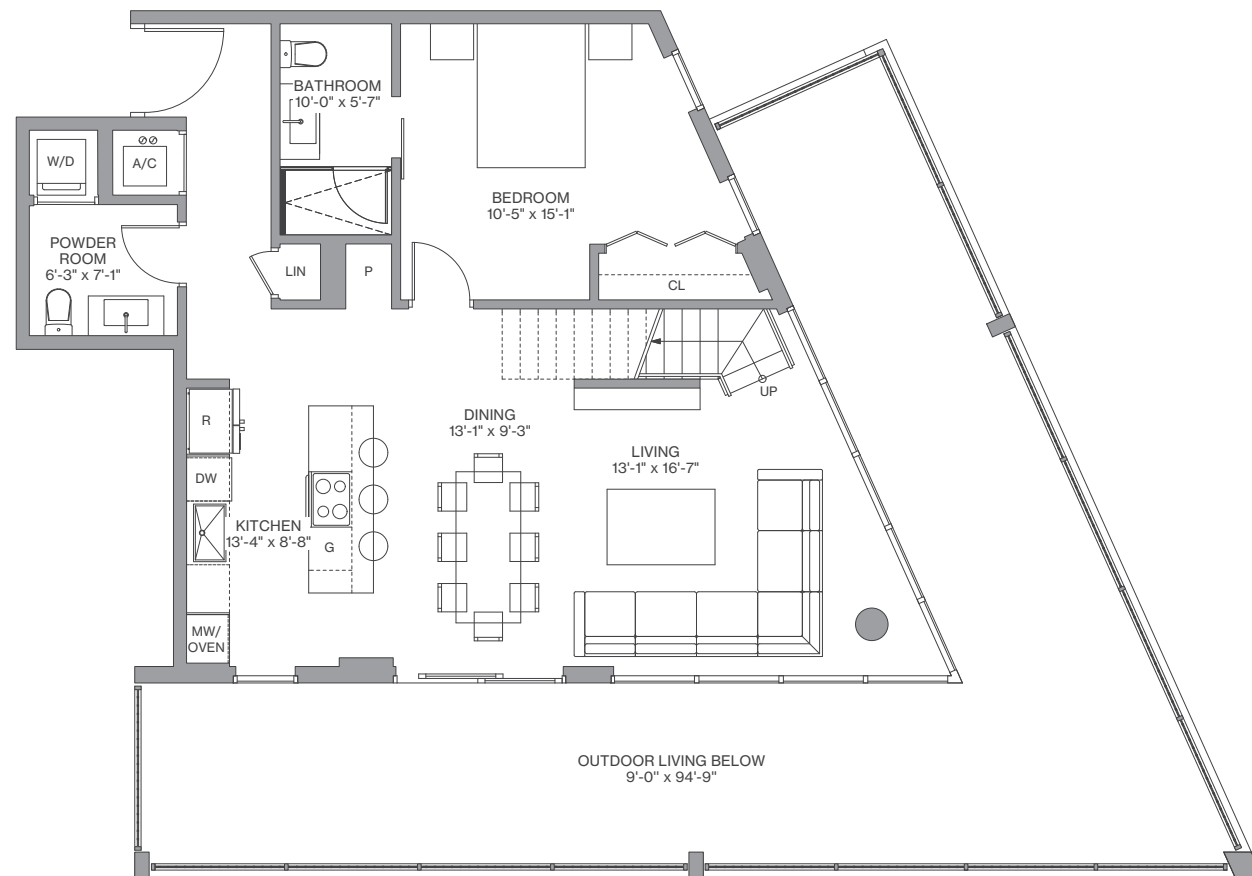
3 Bedrooms / 3.5 Baths

Floors: 27 - 28

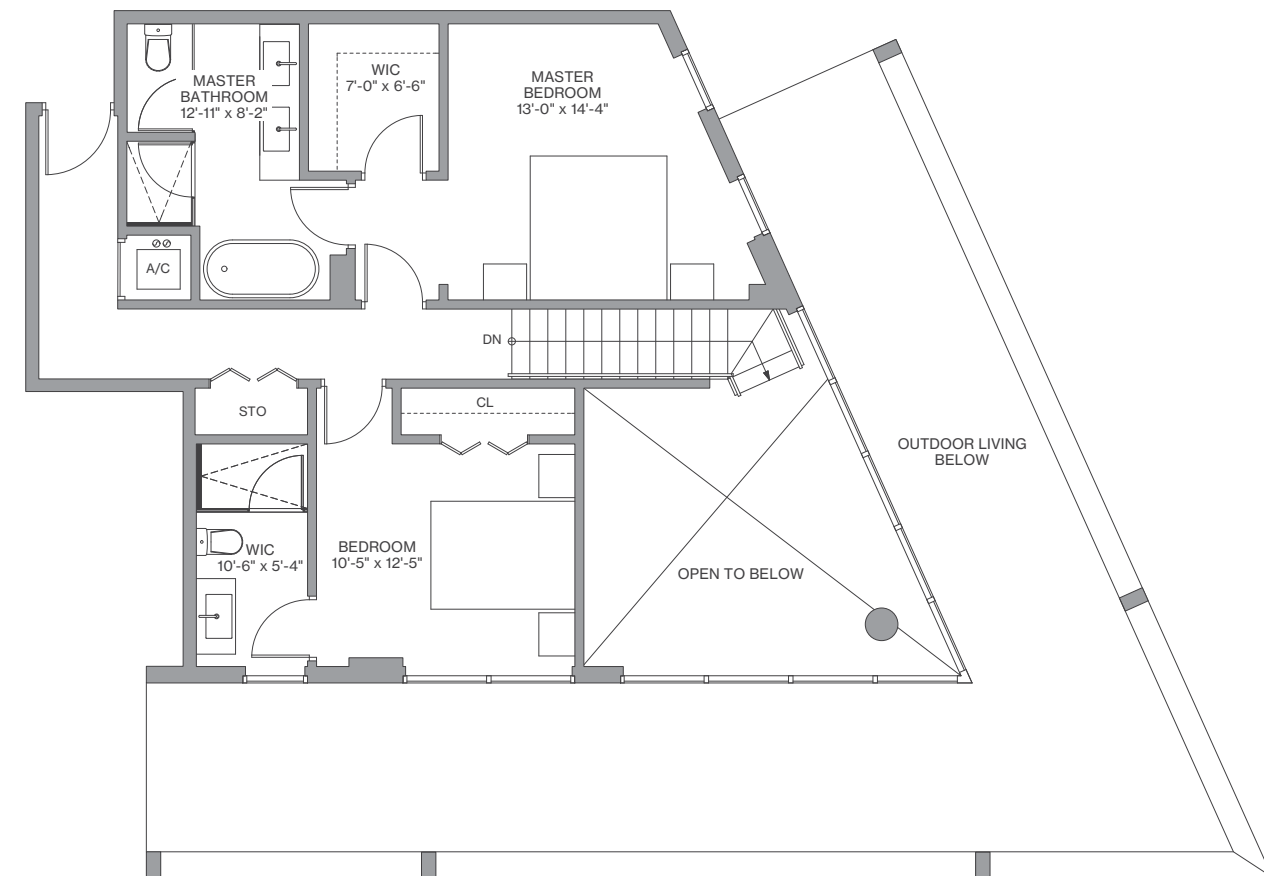
Residence Interior	1,772 Sq Ft	165 Sq M
Outdoor Living	350 Sq Ft	32 Sq M
Total :	2,122 Sq Ft	197 Sq M



FLOORS 27 - 28



Lower



Upper



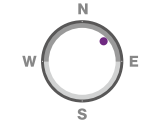
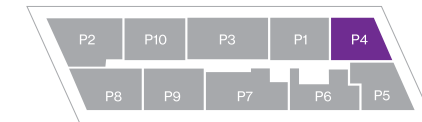
We are pledged to the letter and spirit of U.S. policy for the achievement of equal housing throughout the Nation. We encourage and support an affirmative advertising, marketing and sales program in which there are no barriers to obtaining housing because of race, color, sex, religion, handicap, familial status or national origin. Any stated square footages, dimensions and other measurements reflected herein are based on preliminary pre-construction plans, which are subject to change without notice and will vary with actual construction. Any stated square footages, dimensions and other measurements of units are measured to the exterior boundaries of the exterior walls and the centerline of interior demising walls between units and will vary from the dimensions of the unit that would be determined by using the description and definition of the "Unit" as set forth in the Declaration of Condominium (the "Declaration") for the Condominium (which generally only includes the interior airspace between the perimeter walls and excludes all interior structural components and other common elements). This method of measurement is generally used in sales materials and is provided to allow a prospective purchaser to compare the units in the Condominium with units in other condominium projects that utilize the same method. Terraces, patios and balconies are not part of the unit. Measurements and dimensions of rooms are generally taken at the farthest points of each given room (as if the room were a perfect rectangle), without regard for any cutouts, soffits or other variations. Accordingly, the square footage of the actual room will typically be smaller than the product obtained by multiplying the stated length and width. For the square footage of the units based on the definition of "Unit" in the Declaration, refer to Exhibit "2" to the Declaration included in the Condominium Documents. Each purchaser is advised that there are various methods for calculating the square footage of a Unit, and that, depending on the method of calculation, the quoted square footage of a Unit in advertising materials may vary from the square footage quoted in the Prospectus and Declaration. The dimensions of the Unit shown in these floor plans have been calculated from the exterior boundaries of the exterior walls to the centerline of interior demising walls, including common elements such as structural walls and other interior structural components of the building, and in fact vary from the dimensions that would be determined by using the description and definition of the "Unit" set forth in the Prospectus and Declaration. The area of the Unit as defined in the Prospectus and Declaration is less than the square footage reflected here. Measurements of rooms set forth on this floor plan are generally taken at the greatest points (as if the room were a perfect rectangle), without regard for any cutouts, meaning the usable area of the actual room will typically be smaller than calculated by multiplying the length times width. All dimensions are approximate, may vary with actual construction, and are subject to development plans which may change. The furnishings and décor illustrated or depicted are not included with the purchase of the Unit. See Prospectus for information on what is offered with the Unit and the Unit square footage and dimensions.

P4 / Line 10

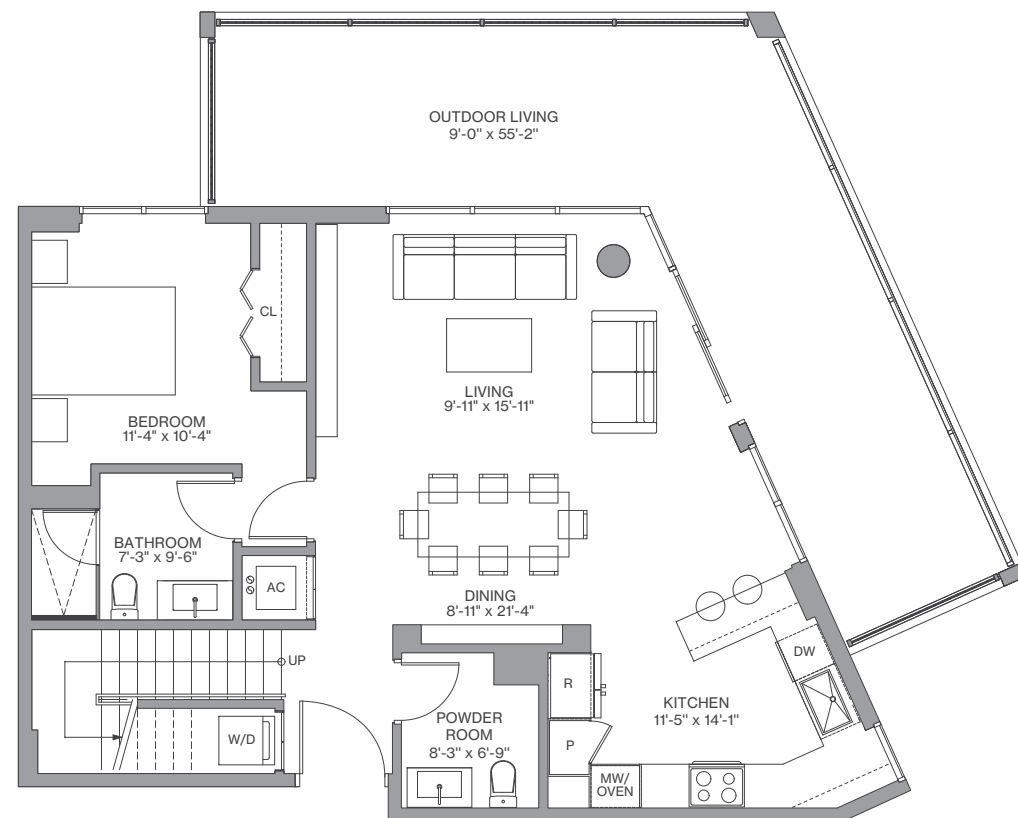
3 Bedrooms / 3.5 Baths

Floors: 27 - 28

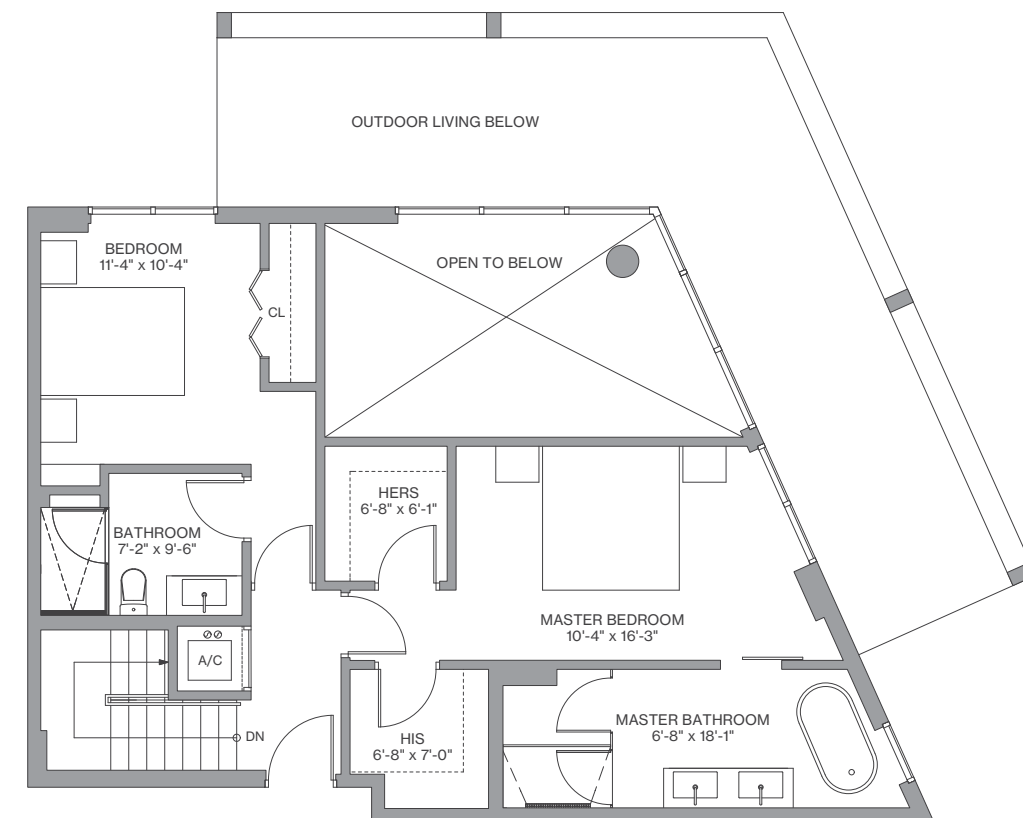
Residence Interior	1,758 Sq Ft	163 Sq M
Outdoor Living	444 Sq Ft	41 Sq M
Total :	2,202 Sq Ft	205 Sq M



FLOORS 27 - 28



Lower



Upper



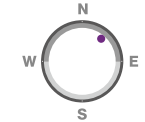
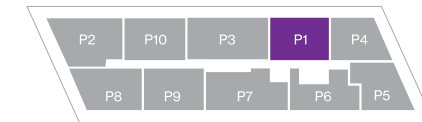
We are pledged to the letter and spirit of U.S. policy for the achievement of equal housing throughout the Nation. We encourage and support an affirmative advertising, marketing and sales program in which there are no barriers to obtaining housing because of race, color, sex, religion, handicap, familial status or national origin. Any stated square footages, dimensions and other measurements reflected herein are based on preliminary pre-construction plans, which are subject to change without notice and will vary with actual construction. Any stated square footages, dimensions and other measurements of units are measured to the exterior boundaries of the exterior walls and the centerline of interior demising walls between units and will vary from the dimensions of the unit that would be determined by using the description and definition of the "Unit" as set forth in the Declaration of Condominium (the "Declaration") for the Condominium (which generally only includes the interior airspace between the perimeter walls and excludes all interior structural components and other common elements). This method of measurement is generally used in sales materials and is provided to allow a prospective purchaser to compare the units in the Condominium with units in other condominium projects that utilize the same method. Terraces, patios and balconies are not part of the unit. Measurements and dimensions of rooms are generally taken at the farthest points of each given room (as if the room were a perfect rectangle), without regard for any cutouts, soffits or other variations. Accordingly, the square footage of the actual room will typically be smaller than the product obtained by multiplying the stated length and width. For the square footage of the units based on the definition of "Unit" in the Declaration, refer to Exhibit "2" to the Declaration included in the Condominium Documents. Each purchaser is advised that there are various methods for calculating the square footage of a Unit, and that, depending on the method of calculation, the quoted square footage of a Unit in advertising materials may vary from the square footage quoted in the Prospectus and Declaration. The dimensions of the Unit shown in these floor plans have been calculated from the exterior walls to the centerline of interior demising walls, including common elements such as structural walls and other interior structural components of the building, and in fact vary from the dimensions that would be determined by using the description and definition of the "Unit" set forth in the Prospectus and Declaration. The area of the Unit as defined in the Prospectus and Declaration is less than the square footage reflected here. Measurements of rooms set forth on this floor plan are generally taken at the greatest points (as if the room were a perfect rectangle), without regard for any cutouts, meaning the usable area of the actual room will typically be smaller than calculated by multiplying the length times width. All dimensions are approximate, may vary with actual construction, and are subject to development plans which may change. The furnishings and décor illustrated or depicted are not included with the purchase of the Unit. See Prospectus for information on what is offered with the Unit and the Unit square footage and dimensions.

P1 / Line 11

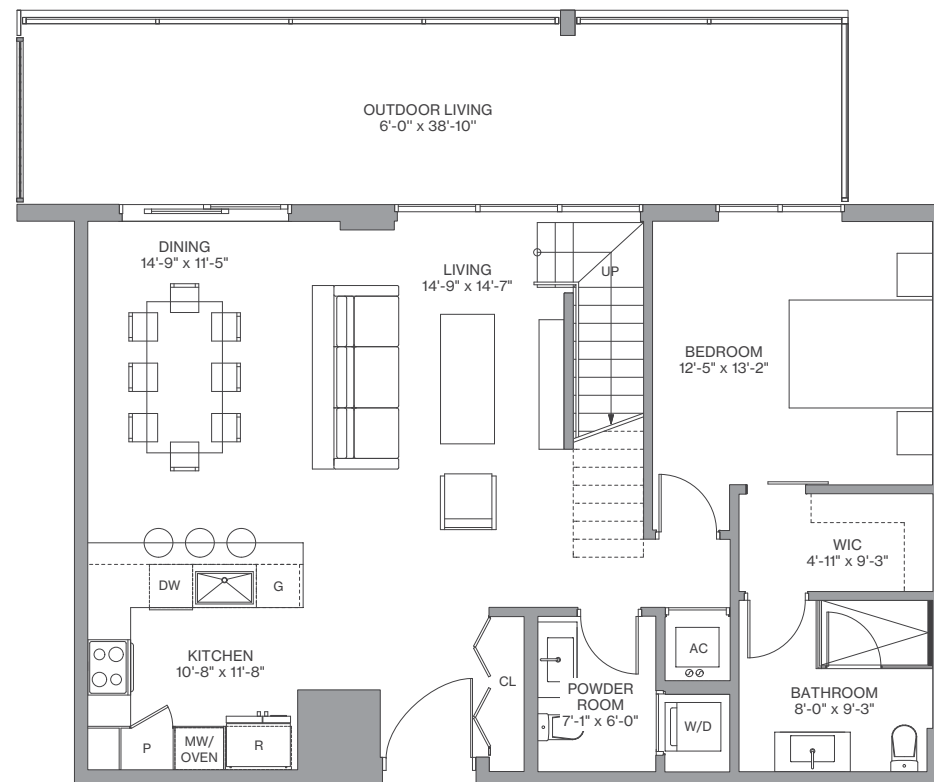
3 Bedrooms / 3.5 Baths

Floors: 27 - 28

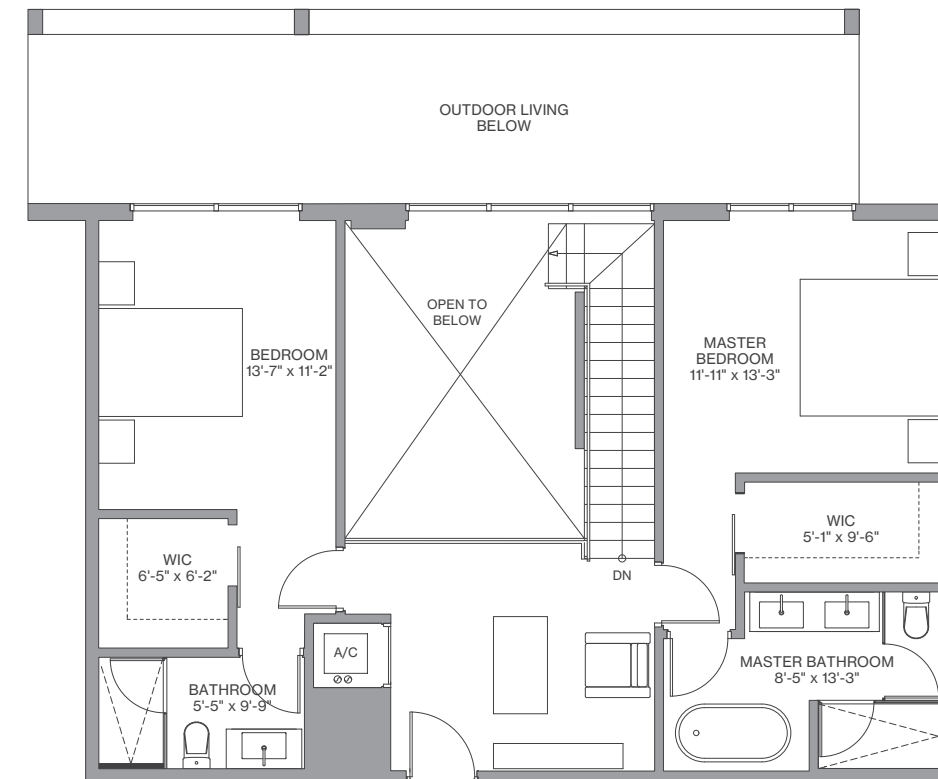
Residence Interior	1,876 Sq Ft	174 Sq M
Outdoor Living	347 Sq Ft	32 Sq M
Total :	2,223 Sq Ft	207 Sq M



FLOORS 27 - 28



Lower



Upper



We are pledged to the letter and spirit of U.S. policy for the achievement of equal housing throughout the Nation. We encourage and support an affirmative advertising, marketing and sales program in which there are no barriers to obtaining housing because of race, color, sex, religion, handicap, familial status or national origin. Any stated square footages, dimensions and other measurements reflected herein are based on preliminary pre-construction plans, which are subject to change without notice and will vary with actual construction. Any stated square footages, dimensions and other measurements of units are measured to the exterior boundaries of the exterior walls and the centerline of interior demising walls between units and will vary from the dimensions of the unit that would be determined by using the description and definition of the "Unit" as set forth in the Declaration of Condominium (the "Declaration") for the Condominium (which generally only includes the interior airspace between the perimeter walls and excludes all interior structural components and other common elements). This method of measurement is generally used in sales materials and is provided to allow a prospective purchaser to compare the units in the Condominium with units in other condominium projects that utilize the same method. Terraces, patios and balconies are not part of the unit. Measurements and dimensions of rooms are generally taken at the farthest points of each given room (as if the room were a perfect rectangle), without regard for any cutouts, soffits or other variations. Accordingly, the square footage of the actual room will typically be smaller than the product obtained by multiplying the stated length and width. For the square footage of the units based on the definition of "Unit" in the Declaration, refer to Exhibit "2" to the Declaration included in the Condominium Documents. Each purchaser is advised that there are various methods for calculating the square footage of a Unit, and that, depending on the method of calculation, the quoted square footage of a Unit in advertising materials may vary from the square footage quoted in the Prospectus and Declaration. The dimensions of the Unit shown in these floor plans have been calculated from the exterior boundaries of the exterior walls to the centerline of interior demising walls, including common elements such as structural walls and other interior structural components of the building, and in fact vary from the dimensions that would be determined by using the description and definition of the "Unit" set forth in the Prospectus and Declaration. The area of the Unit as defined in the Prospectus and Declaration is less than the square footage reflected here. Measurements of rooms set forth on this floor plan are generally taken at the greatest points (as if the room were a perfect rectangle), without regard for any cutouts, meaning the usable area of the actual room will typically be smaller than calculated by multiplying the length times width. All dimensions are approximate, may vary with actual construction, and are subject to development plans which may change. The furnishings and décor illustrated or depicted are not included with the purchase of the Unit. See Prospectus for information on what is offered with the Unit and the Unit square footage and dimensions.